



Application Note

AN0003

SK5100/SK5101 Evaluation Kit User Guide

Associated Part Family: SK5100, SK5101, KIT-SK5100EVK, KIT-SK5101EVK

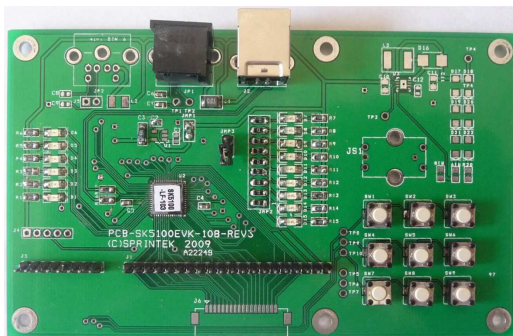
1. Overview

The evaluation kit has been designed to accelerate your development of your own keyboard product using SK5100/5101 FlexMatrix keyboard controller. The FlexMatrix keyboard controllers provide developers the most cost-effective, shortest time-to-market solutions to the industrial customers. The FlexMatrix products are also well suited for laptop/netbook OEMs due to its low cost and small package.

Part# KIT-SK5100EVK - Evaluation kit for SK5100

Part# KIT-SK5101EVK - Evaluation kit for SK5101

2. Kit Contents



ASY-SK5100EVKA-vvv
or ASY-SK5101EVKA-vvv
(vvv is IC version #)

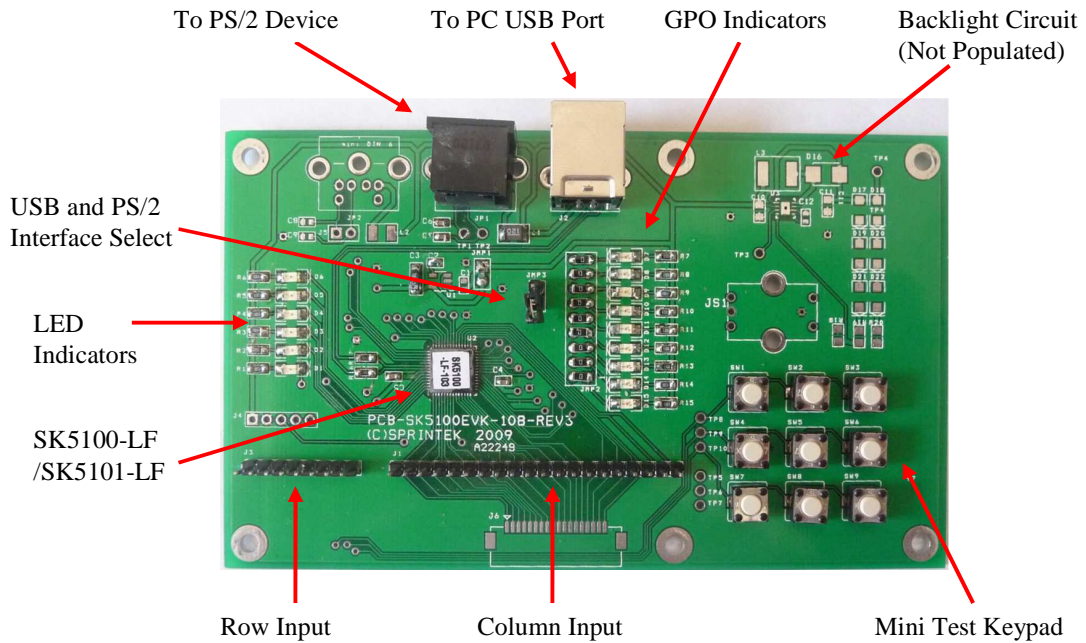


USB A To B Cable

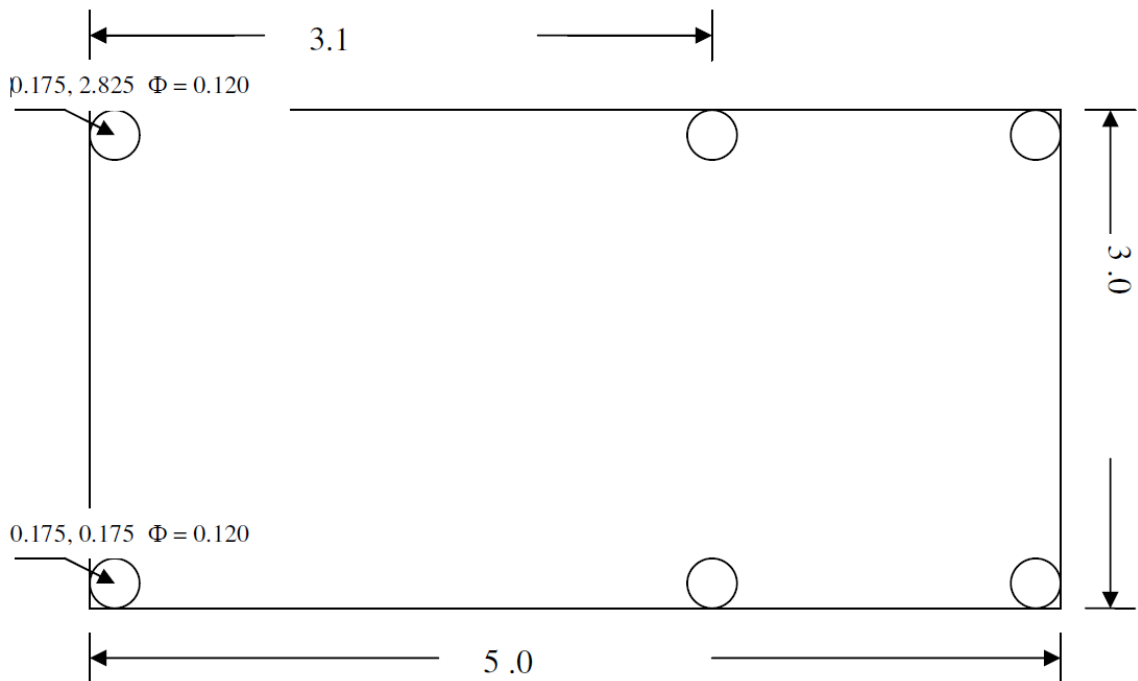


USB to PS/2
Adaptor

3. Board



4. Dimension



Unit in inch

5. Get Started

Setup USB Mode:

- 1) Keep JMP3 open
 - 2) Connect USB cable to evaluation board and PC USB port
- The evaluation board will work as a USB keyboard.

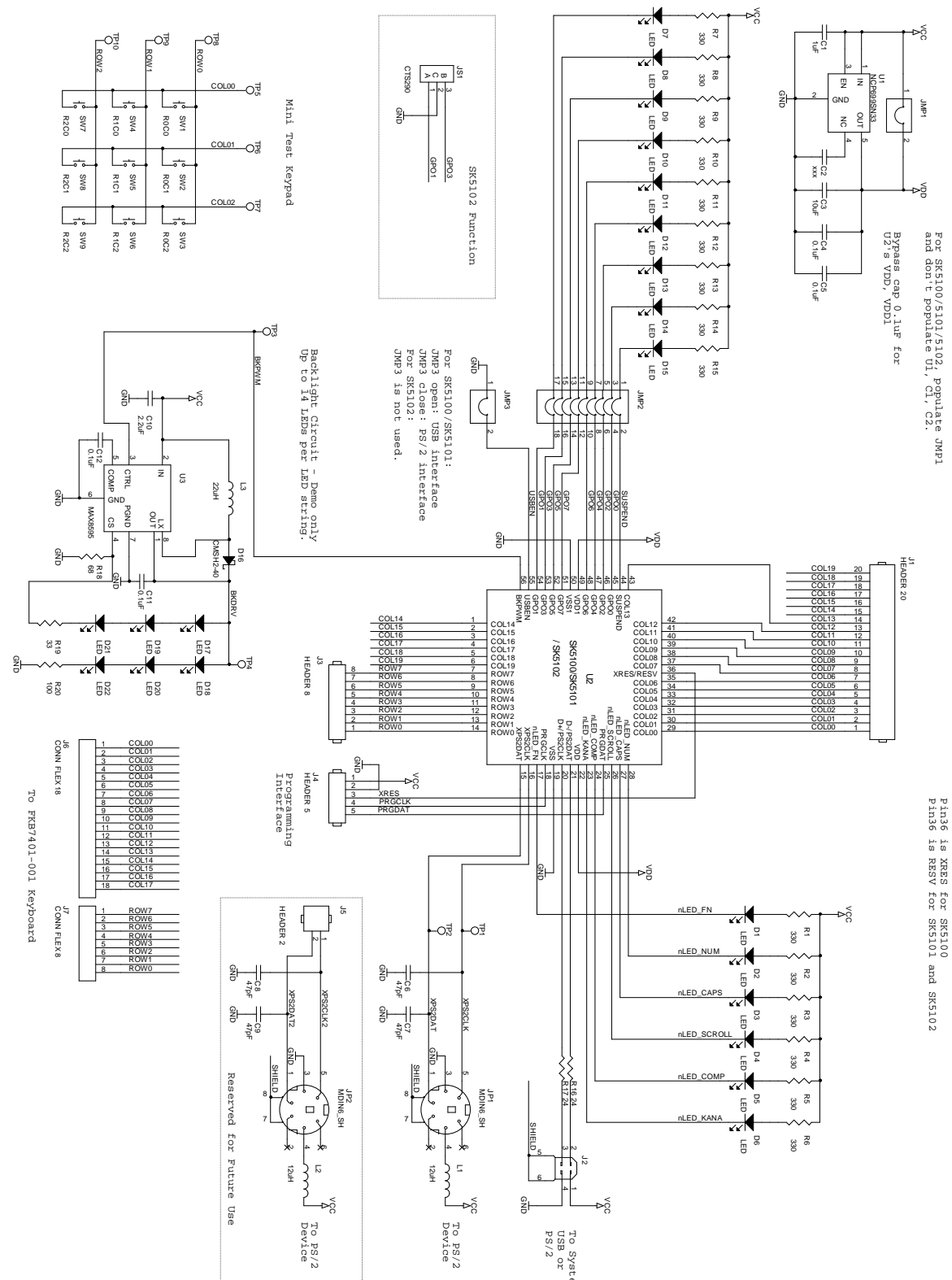
Setup PS/2 Mode:

- 1) Keep JMP3 close
 - 2) Connect USB cable to evaluation board
 - 3) Connect USB to PS/2 adaptor to the USB cable
 - 4) Connect USB to PS/2 adaptor to PC PS/2 keyboard port
- The evaluation board will work as a PS/2 keyboard.

6. Helpful Documents

Doc#	Description
DS0002	SK5100/SK5101 Datasheet
AN0001	Instruction to Configure FlexMatrix Keyboard Controllers to Support Selective Suspend
AN0002	Customize FlexMatrix Keyboard Controllers

7. Evaluation Board Schematic



8. Support

To obtain information about Sprintek Corporation or FlexMatrix keyboard controller family sales and technical support, reference the following information.

Sprintek Corporation

4969 Corral St.

Simi Valley, CA 93063, USA

Phone: 805.405.8787

Web Site: <http://www.sprintek.com>